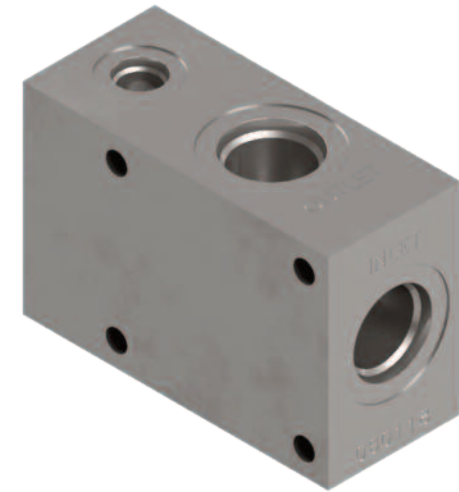
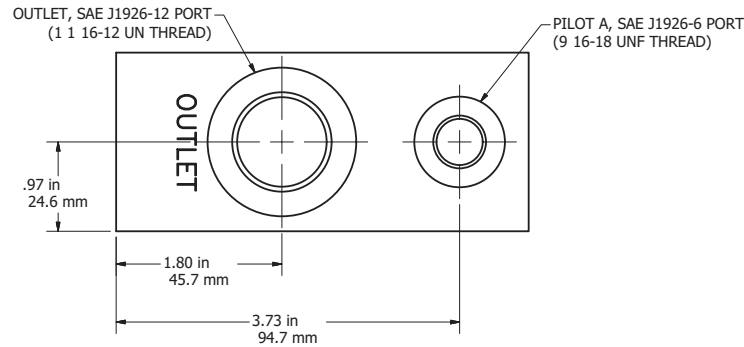
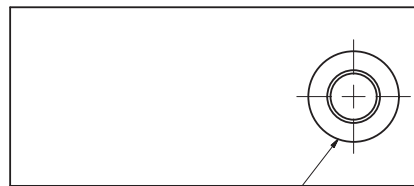
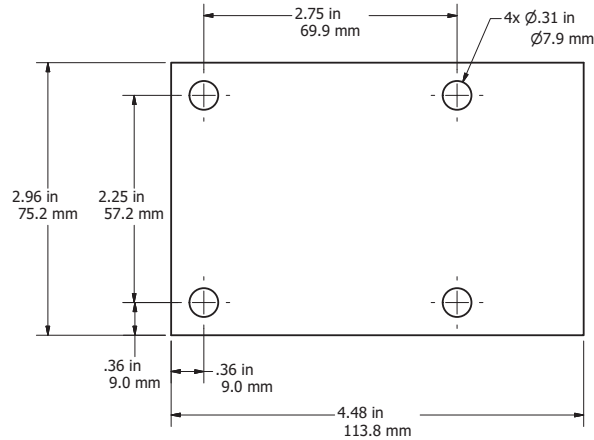
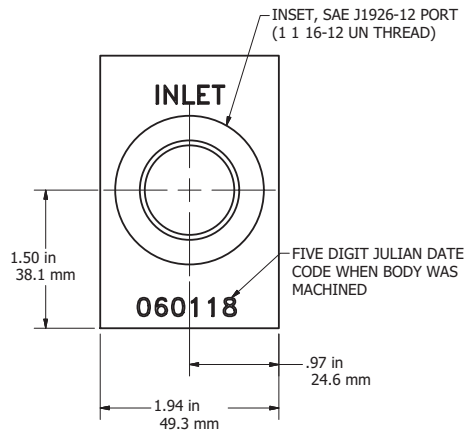


**PERFORMANCE:**

- ACTIVATION TIME: 5 SECONDS
- SERVICE PRESSURES: 10 BAR - 250 BAR 150 PSI - 3600 PSI
- MAWP: 4500 PSI 310 BAR
- FLOW RATE: 450 SCFM
- LEAK RATE:  $1.0 * 10^{-4}$  SCCS
- APPROVED GAS: CNG
- CERTIFIED TO ANSI NGV 3.1-2014 • CSA 12.3-2014
- ACTIVATION OCCURS WHEN PILOT PRESSURE DROPS TO APPROX. HALF OF INLET PRESSURE
- INTERNAL CHECK VALVE RETAINS PRESSURE IN THE PILOT SIDE DURING NORMAL OPERATION



**BAV, Balanced Actuator Valve**



**WETTED MATERIALS, EXTERIOR:**

- 304 AND 316 STAINLESS STEEL

**WETTED MATERIALS, GAS:**

- 302, 304 AND 316 STAINLESS STEEL
- FLUOROCARBON

- STAINLESS STEEL MATERIALS EXCEPT HEX PLUG ARE PASSIVATED

**THIS DRAWING CONTAINS PROPRIETARY INFORMATION AND MAY NOT BE DISCLOSED WITHOUT PRIOR WRITTEN CONSENT.**

UNLESS OTHERWISE STATED:

ALL DIMENSIONS ARE IN  
IMPERIAL INCHES  
TOLERANCE:  
ONE PLACE DEC. = ±.05  
TWO PLACE DEC. = ±.01  
THREE PLACE DEC. = ±.005  
ANGLE = ± 1°

MATERIAL:

FINISH:

DO NOT SCALE DRAWING



TITLE:  
BADGER BAV, BALANCED ACTUATOR VALVE

SIZE C	DWG. NO. BAV-CUSTOMER	REV NC
-----------	--------------------------	-----------

SCALE: 1 : 1	WEIGHT: N A	SHEET 1 OF 1
--------------	-------------	--------------