



EMCARA

EMCARA GAS DEVELOPMENT INC.

Safety Technology for Alternative Fuel Systems

BADGER BAV - BALANCED ACTUATOR VALVE BAV Series

FEATURES

The Badger BAV is a remote Balanced Actuator Valve designed to provide high gas venting flow rates suitable for the largest bulk storage tanks. The Badger can be triggered by any one of multiple Emcara PRD's in a system; enabling multiple large tanks to vent rapidly while preventing cross-flow between tanks. The Badger is a complimentary product to Emcara PRD's and provides system design flexibility and flow rates in excess of those provided by PRD's. The robust stainless-steel construction of the BAV, ensures reliable operation in the harshest environmental conditions. Emcara's BAV is manufactured from a solid block of stainless steel to the highest standards, resulting in a device that vents gas rapidly and safely, from a strategic location within the PRD system.

PERFORMANCE & GEOMETRY

Gas Type: CNG

Pressure: 3600 psi nominal

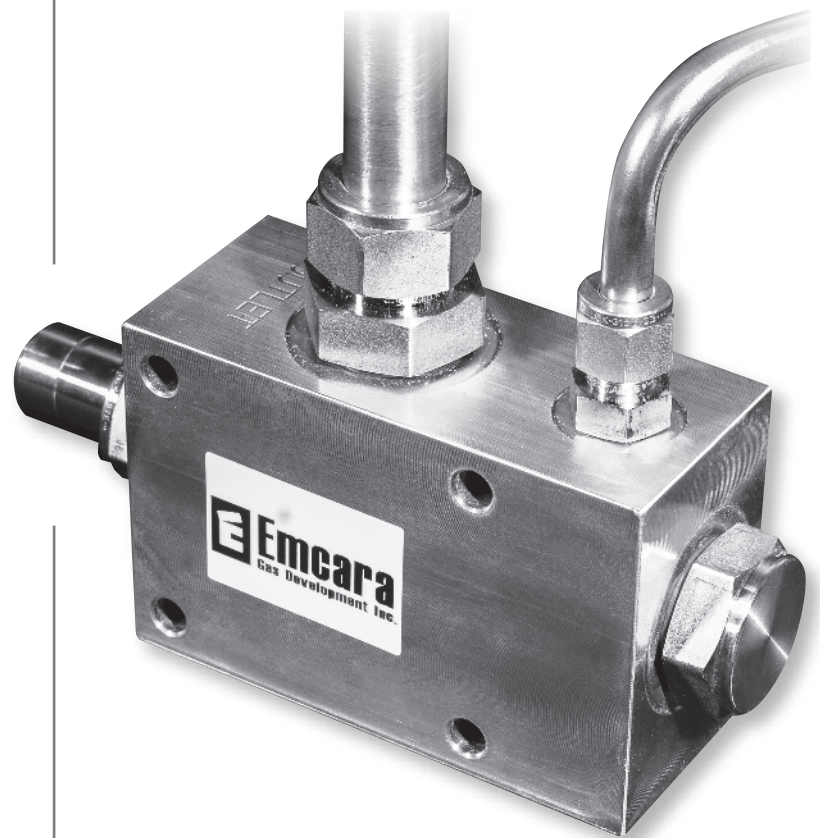
Flow Rate: 450 SCFM (per PRD1/ISO15500)

Body Size: 2" x 3" x 5"

Inlet Connection: SAE J1926-12 Port

Outlet Connection: SAE J1926-8 Port

Body Construction: Stainless Steel

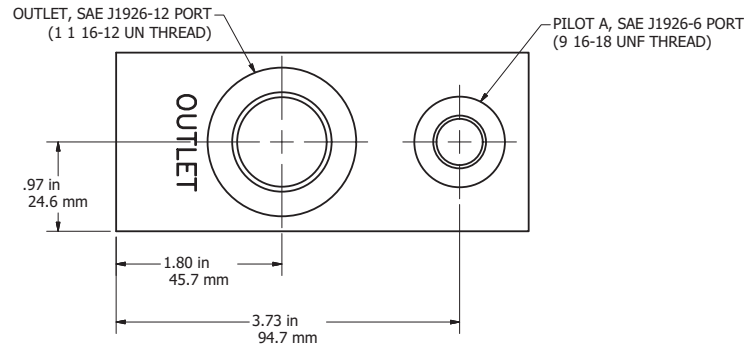


www.emcara.com

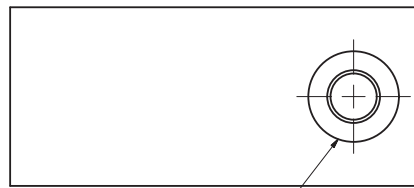
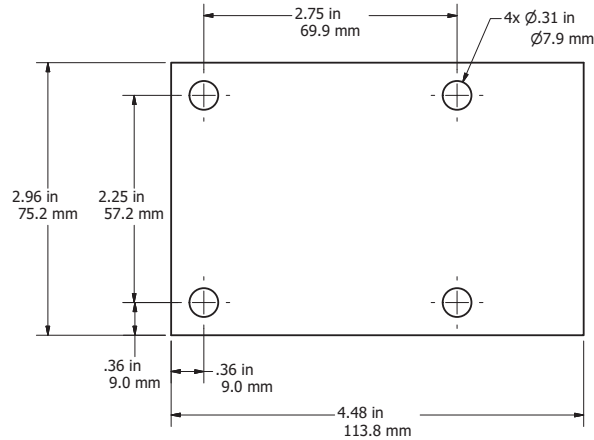
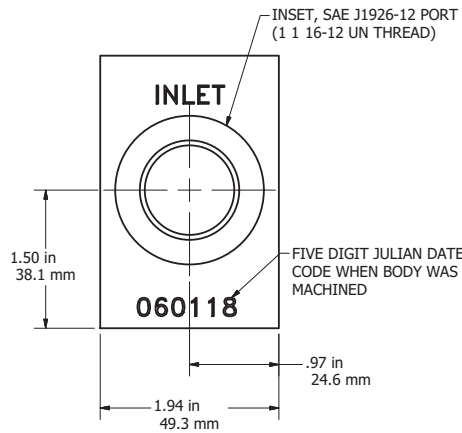
20 YEARS OF ALTERNATIVE FUELS EXPERIENCE
INNOVATIVE THINKING AND PRODUCTS
BULK HAUL, FUEL SYSTEMS, GROUND STORAGE

PERFORMANCE:

- ACTIVATION TIME: 5 SECONDS
- SERVICE PRESSURES: 10 BAR - 250 BAR 150 PSI - 3600 PSI
- MAWP: 4500 PSI 310 BAR
- FLOW RATE: 450 SCFM
- LEAK RATE: 1.0×10^{-4} SCCS
- APPROVED GAS: CNG
- CERTIFIED TO ANSI NGV 3.1-2014 • CSA 12.3-2014
- ACTIVATION OCCURS WHEN PILOT PRESSURE DROPS TO APPROX. HALF OF INLET PRESSURE
- INTERNAL CHECK VALVE RETAINS PRESSURE IN THE PILOT SIDE DURING NORMAL OPERATION



BAV, Balanced Actuator Valve



WETTED MATERIALS, EXTERIOR:

- 304 AND 316 STAINLESS STEEL

WETTED MATERIALS, GAS:

- 302, 304 AND 316 STAINLESS STEEL
- FLUOROCARBON

- STAINLESS STEEL MATERIALS EXCEPT HEX PLUG ARE PASSIVATED

THIS DRAWING CONTAINS PROPRIETARY INFORMATION AND MAY NOT BE DISCLOSED WITHOUT PRIOR WRITTEN CONSENT.			
UNLESS OTHERWISE STATED: ALL DIMENSIONS ARE IN IMPERIAL INCHES TOLERANCE: ONE PLACE DEC. = ±.05 TWO PLACE DEC. = ±.01 THREE PLACE DEC. = ±.005 ANGLE = ± 1°			
MATERIAL:		TITLE: BADGER BAV, BALANCED ACTUATOR VALVE	
FINISH:		SIZE C	DWG. NO. BAV-CUSTOMER
DO NOT SCALE DRAWING		SCALE: 1 : 1	REV NC
		WEIGHT: N/A	SHEET 1 OF 1