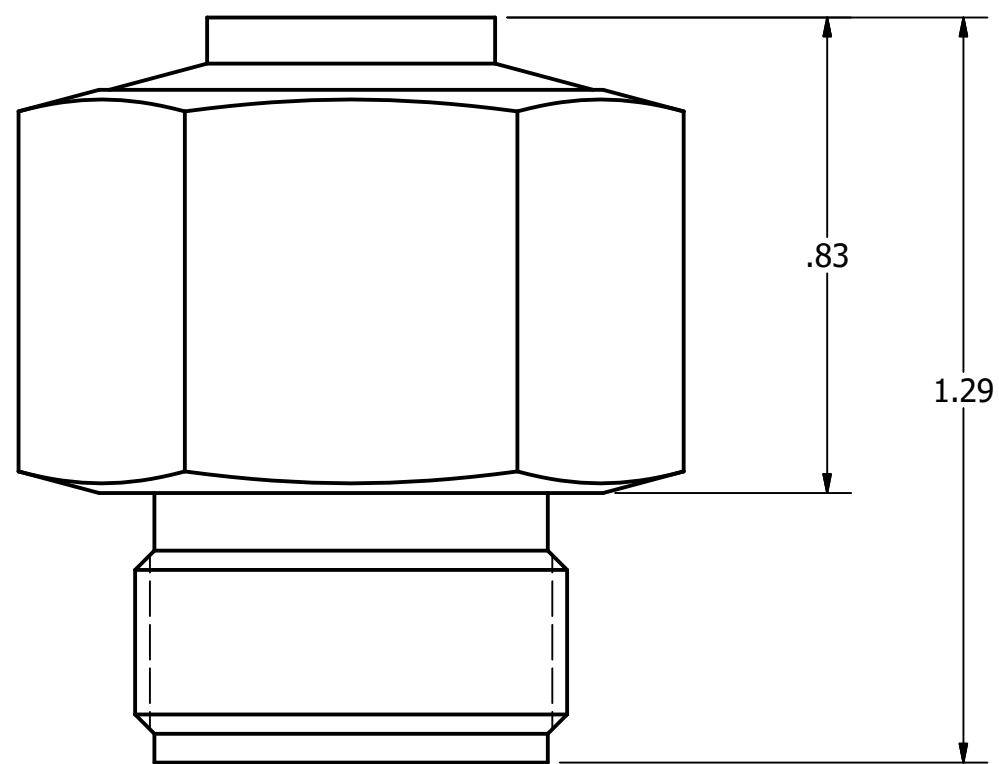


CONNECTION: ACCEPTS PRE-SWAGED 1/2" TUBE WITH NUT AND FERRULE  
 NOMINAL CRACKING PRESSURE: 10 - 20 PSI




ACCEPTS PRE-SWAGGED 1/2" TUBE  
 1-20 UNEF - 2A  
 MOUNTS TO TUBE USING  
 STANDARD NUT AND FERRULES

NOTES:  
 1. ALL EXTERNAL MATERIALS ARE STAINLESS STEEL  
 2. VITON O-RING ON POPPET  
 3. **NUTS AND FERRULES MUST BE PRESWAGED TO TUBE**

OPTIONS  
 VC005  
 -NO NUTS OR FERRULES

VC005-**GC**  
 -GENERIC NUTS AND FERRULES

VC005-**SC**  
 -SWAGELOK NUTS AND FERRULES

<b>THIS DRAWING CONTAINS PROPRIETARY INFORMATION AND MAY NOT BE DISCLOSED WITHOUT PRIOR WRITTEN CONSENT.</b>				
UNLESS OTHERWISE STATED: ALL DIMENSIONS ARE IN IMPERIAL INCHES TOLERANCE: ONE PLACE DEC. = ±.05 TWO PLACE DEC. = ±.01 THREE PLACE DEC. = ±.005 ANGLE = ± 1°		 <b>EMCARA</b> GAS DEVELOPMENT INC. TITLE: VENT CAP, 1/2"		
MATERIAL:				
FINISH:		SIZE C	DWG. NO. VC005	REV NC
DO NOT SCALE DRAWING		SCALE: 3 : 1	WEIGHT: N/A	SHEET 1 OF 1