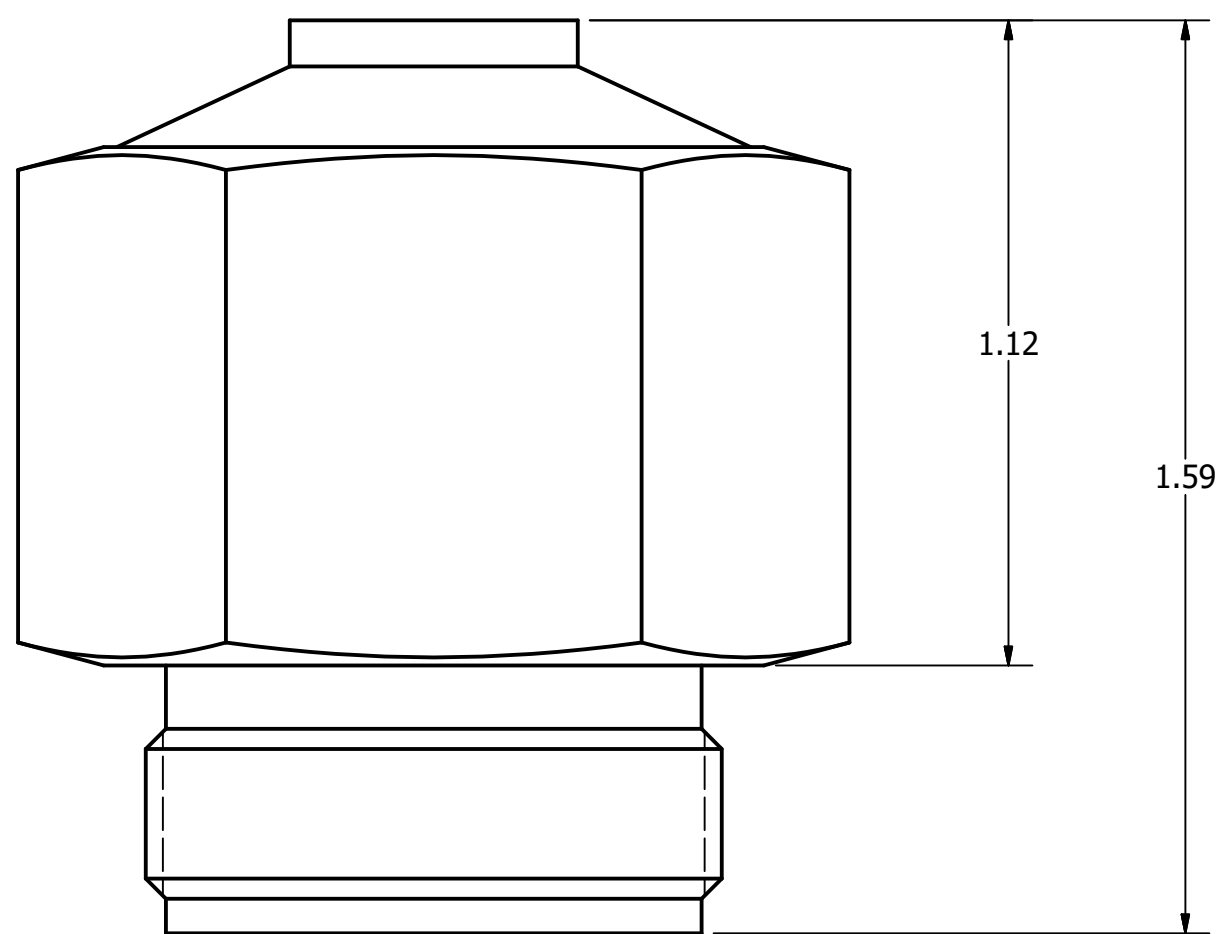


CONNECTION: ACCEPTS PRE-SWAGED 3/4 TUBE WITH NUT AND FERRULE
 NOMINAL CRACKING PRESSURE: 10 - 20 PSI



ACCEPTS PRE-SWAGED 3/4" TUBE
 1-20 UNEF - 2A
 MOUNTS TO TUBE USING
 STANDARD NUT AND FERRULES


- NOTES:
 1. ALL EXTERNAL MATERIALS ARE STAINLESS STEEL
 2. VITON O-RING ON POPPET
 3. **NUTS AND FERRULES MUST BE PRESWAGED TO TUBE**

OPTIONS
 VC007B
 -NO NUTS OR FERRULES

VC007B-**GC**
 -GENERIC NUTS AND FERRULES

VC007B-**SC**
 -SWAGELOK NUTS AND FERRULES

THIS DRAWING CONTAINS PROPRIETARY INFORMATION AND MAY NOT BE DISCLOSED WITHOUT PRIOR WRITTEN CONSENT.

UNLESS OTHERWISE STATED: ALL DIMENSIONS ARE IN IMPERIAL INCHES TOLERANCE: ONE PLACE DEC. = ±.05 TWO PLACE DEC. = ±.01 THREE PLACE DEC. = ±.005 ANGLE = ± 1' MATERIAL:		 EMCARA GAS DEVELOPMENT INC.
FINISH:		
DO NOT SCALE DRAWING		TITLE: STAINLESS STEEL VENT CAP, 3/4"
SIZE	DWG. NO.	REV
C	VC007B	NC
SCALE: 3 : 1	WEIGHT: N/A	SHEET 1 OF 1