



EMCARA

EMCARA GAS DEVELOPMENT INC.

Safety Technology for Alternative Fuel Systems

VC SERIES VENT CAPS

FEATURES

The leading cause of PRD failures remains water and ice damage, despite years of attempts to bring this to light in the industry. As a reliable solution, Emcara has developed a line of stainless-steel spring-loaded Vent Caps.

Emcara Garter Series Vent Caps are the most effective way of preventing water and foreign material from entering a CNG or Hydrogen PRD system. Utilizing stainless steel construction, Emcara Garter Vent Caps are built to last and are resistant to pressure washing and impact. Our Vent Caps are designed to vent gas and reseal, eliminating the possibility of the vent tube and PRD system becoming contaminated, even if a small amount of gas has vented.

VC005 and VC010 are sized for use with Emcara PRDs without reducing the flow rate of the PRD. VC007 is sized for use with Emcara's Badger BAV, without reducing the overall flow rate.

All Vent Caps must be replaced after PRD activation.

Emcara Garter Series Vent Caps are available in convenient configurations:

- VC007: 3/4" tube (available with or without nut & ferrule set).
- VC005: 1/2" tube (available with or without nut & ferrule set).
- VC010: SAE-8 J1926 Port (eliminates the need for fittings & tube).
- VC009: 3/8" tube (available with or without nut & ferrule set).
- VC014: 3/4" NPT Port (eliminates the need for fittings & tube).
- VC015: 3/4" tube (available with or without nut & ferrule set).
- VC016: 1" NPT (threads into 1" NPT fitting).

PERFORMANCE & GEOMETRY

Retained Pressure: <0.5 bar flow rating: >85 SCFM (PRD1 flow rating) for VC005 and VC010.

Contact Emcara for other devices and if used under different flow conditions.

Resistant To: environmental elements, pressure washing, automotive fluids, handling, impact

Operation: Releases gas and reseals for continued performance. Replace following PRD activation.



www.emcara.com

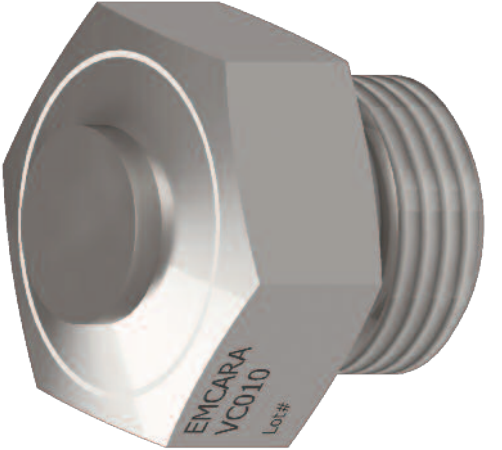
20 YEARS OF ALTERNATIVE FUELS EXPERIENCE
INNOVATIVE THINKING AND PRODUCTS
BULK HAUL, FUEL SYSTEMS, GROUND STORAGE



CONNECTION: ACCEPTS PRE-SWAGED 1.2" TUBE WITH NUT AND FERRULE
NOMINAL CRACKING PRESSURE: 10 - 20 PSI



CONNECTION: ACCEPTS PRE-SWAGED 3/4 TUBE WITH NUT AND FERRULE
NOMINAL CRACKING PRESSURE: 10 - 20 PSI



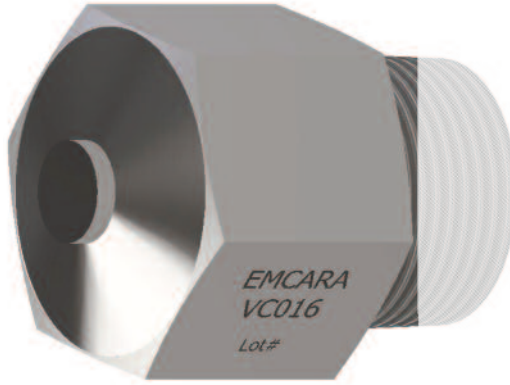
CONNECTION: THREADS DIRECTLY INTO SAE J1926, 8 PORT
(NOMINAL 1.2" TUBE OD)
NOMINAL CRACKING PRESSURE: 10 - 20 PSI



CONNECTION: THREADS DIRECTLY INTO 3/4" NPT FITTING
NOMINAL CRACKING PRESSURE: 10 - 20 PSI



CONNECTION: ACCEPTS PRE-SWAGED 1" TUBE WITH NUT AND FERRULE
NOMINAL CRACKING PRESSURE: 10 - 20 PSI



CONNECTION: THREADS DIRECTLY INTO 1" NPT FITTING
NOMINAL CRACKING PRESSURE: 10 - 20 PSI

UNLESS OTHERWISE STATED: ALL DIMENSIONS ARE IN INCHES TOLERANCES ONE PLACE DEC. = ±.05 TWO PLACE DEC. = ±.01 THREE PLACE DEC. = ±.005 ANGLE = ± 1°		 EMCARA GAS DEVELOPMENT INC.	
TITLE: VC SERIES VENT CAPS		SIZE C	REV NC
MATERIAL:		SCALE:	WEIGHT:
FINISH:		DO NOT SCALE DRAWING	SHEET 1 OF 1